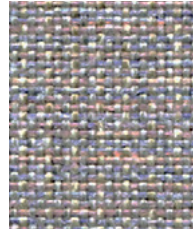


Carlow

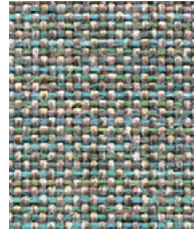
camira



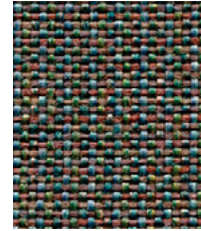
Ardmore
CLW19



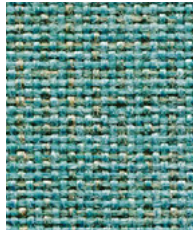
Ardee
CLW10



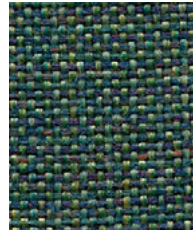
Carrick
CLW18



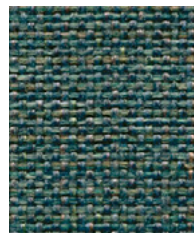
Baloo
CLW17



Mayo
CLW16



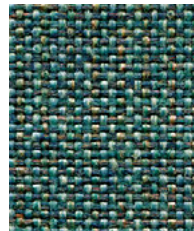
Cavan
CLW15



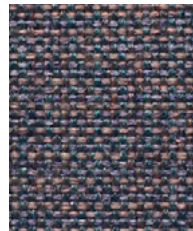
Sligo
CLW13



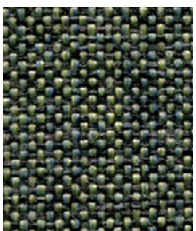
Ennis
CLW20



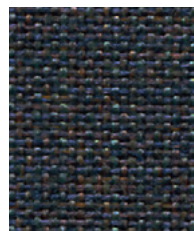
Bree
CLW14



Wicklow
CLW11



Emly
CLW21

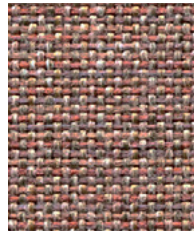


Malin
CLW12

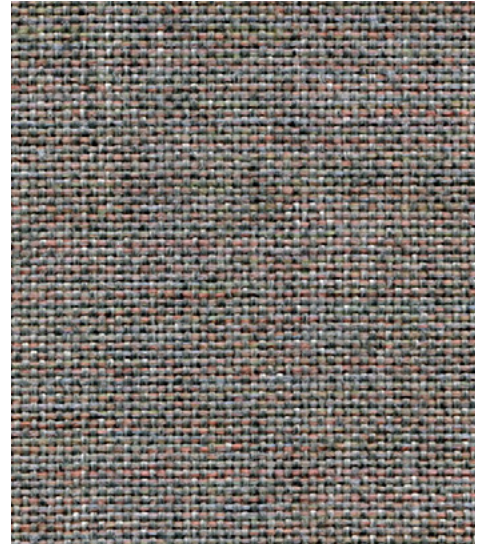
Photographic fabric scans are not color accurate. Always request actual fabric samples before ordering.



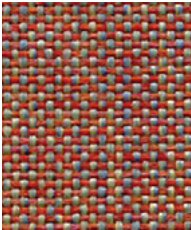
Quin
CLW04



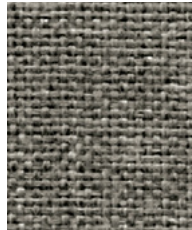
Callan
CLW05



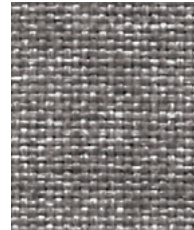
Ballina
CLW02



Navan
CLW06



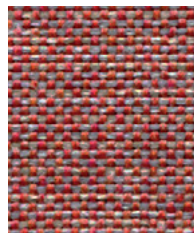
Roundwood
CLW03



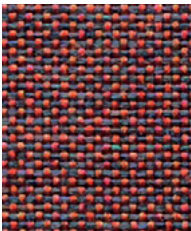
Tallow
CLW01



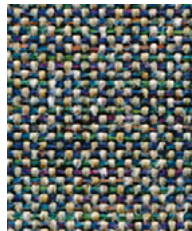
Parteen
CLW23



Dublin
CLW07



Redcross
CLW08



Convoy
CLW09



Glenamoy
CLW24



Clifden
CLW25



Avoca
CLW22



Panels



Acoustic



Year guarantee

Carlow echoes the calm, gentle landscape of its Celtic namesake in rural Ireland. The fabric, like the county, invites you to escape into a place of tranquillity, discovering and exploring its hidden gems scattered throughout a vibrant textile tableau. This dobby weave panel fabric is brought to life in brave and intriguing color mixes which can be teamed with our most popular upholstery fabrics. Carlow is acoustically transparent, making it ideal as a decorative facing for sound absorbing boards.



Carlow meets the ACT voluntary Performance Guidelines for panel fabrics.

Technical information

EN

Composition

100% Polypropylene

Width

66 inches minimum

Weight

6^{1/4} oz/sq yd ±5% (11^{3/4} oz/running yd ±5%)

Flammability

ASTM E84 (Adhered) Class 1 or A
ASTM E84 (Un-adhered) Class 1 or A
Note: Flammability performance is dependent on components used. Our certificates show what substrates have been used in our tests. For composite tests customers must ensure their complete furniture meets the necessary standards.

Color Fastness to Light

AATCC-16 (40 hours) Class 4

Color Fastness to Crocking

AATCC-8 (Dry: 4, Wet: 3)

Acoustic Properties

Acoustically transparent, acoustic graphs available upon request.

Cleaning

W/S
Clean with a water-based cleaning agent or solvent: Depending on the stain, you can use a dry-cleaning solvent, the foam of a mild detergent, or upholstery shampoo.

Batch to batch variations in shade may occur within commercial tolerances. We reserve the right to alter technical specifications without notice. The Unregistered Design Rights and the Copyright in all designs are the exclusive property of Camira Fabrics Limited.

F

Composition

100% Polypropylène

Largeur

66 pouces minimum

Poids

6^{1/4} oz/sq yd ±5% (11^{3/4} oz/lin.yd ±5%)

Flammabilité

ASTM E84 (Adhered) Class 1 or A
ASTM E84 (Un-adhered) Class 1 or A
Notez: La performance de flammabilité dépend des composantes utilisées. Nos certificats indiquent les substrats utilisés dans nos tests. Pour les tests composites, les clients doivent s'assurer que leurs meubles complets satisfont aux normes nécessaires.

Solidité à la Lumière

AATCC-16 (40 heures) Class 4

Solidité à la Crocking

AATCC-8 (Sec: 4, Mouillé: 3)

Propriétés Acoustiques

Acoustiquement transparent, graphiques acoustiques disponibles sur demande.

Nettoyage

W/S
Nettoyer avec un produit d'entretien à base d'eau: en fonction de la tâche, vous pouvez nettoyer à sec, à l'aide d'un détergent ou bien avec du shampooing pour meubles.

Une variation de couleurs peut provenir (commerciallement tolérable). Nous réservons le droit de changer les spécifications techniques sans préavis. Les Droits de Conception non-enregistrés et les droits d'auteur de tous les motifs sont la propriété exclusive de Camira Fabrics Limited.

ES

Composición

100% Polipropileno

Ancho

66 pulgadas mínimo

Peso

6^{1/4} oz/sq yd ±5% (11^{3/4} oz/lin.yd ±5%)

Inflamabilidad

ASTM E84 (Adhered) Class 1 or A
ASTM E84 (Un-adhered) Class 1 or A
Nota: El rendimiento de la inflamabilidad depende de los componentes usados. Nuestros certificados muestran qué substratos se han usado en nuestros tests. Para tests compuestos nuestros clientes deben asegurar si sus muebles cumplen la normativa al uso.

Solidez a la Luz

AATCC-16 (40 horas) Class 4

Solidez al Rozamiento

AATCC-8 (Seco: 4, Húmedo: 3)

Acústico Propiedades

Acústicamente transparente, gráficos disponibles bajo petición.

Limpieza

W/S
Lavar con un producto de limpieza neutro o solvente: en función de la suciedad o mancha, se puede limpiar con un producto de limpieza en seco, espuma templada o producto de limpieza de sofás.

Se reserva el derecho de modificar las especificaciones técnicas sin previo aviso. Los derechos sobre dibujos no registrados y los derechos de autor sobre todos los dibujos son propiedad exclusiva de Camira Group Inc.